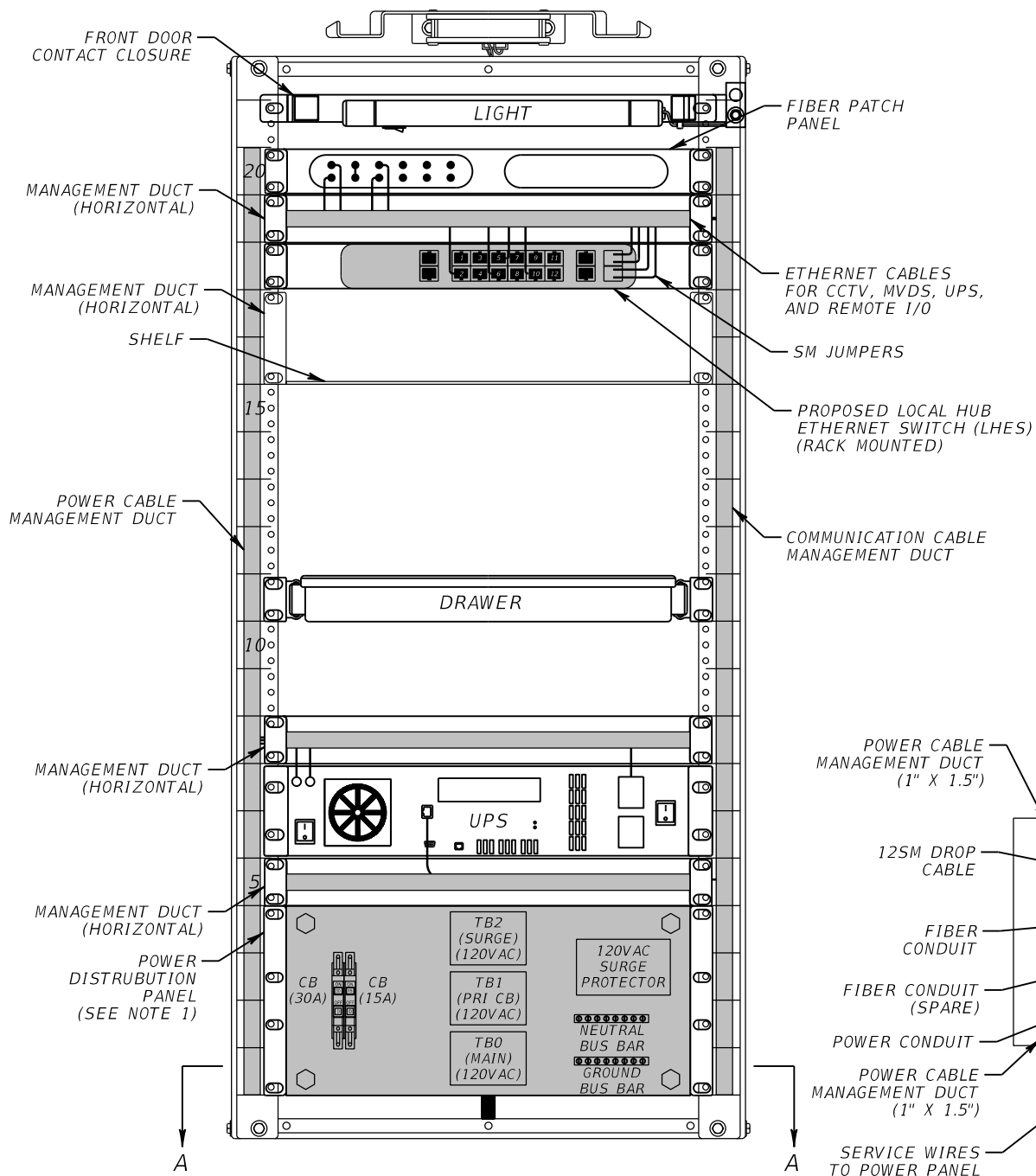
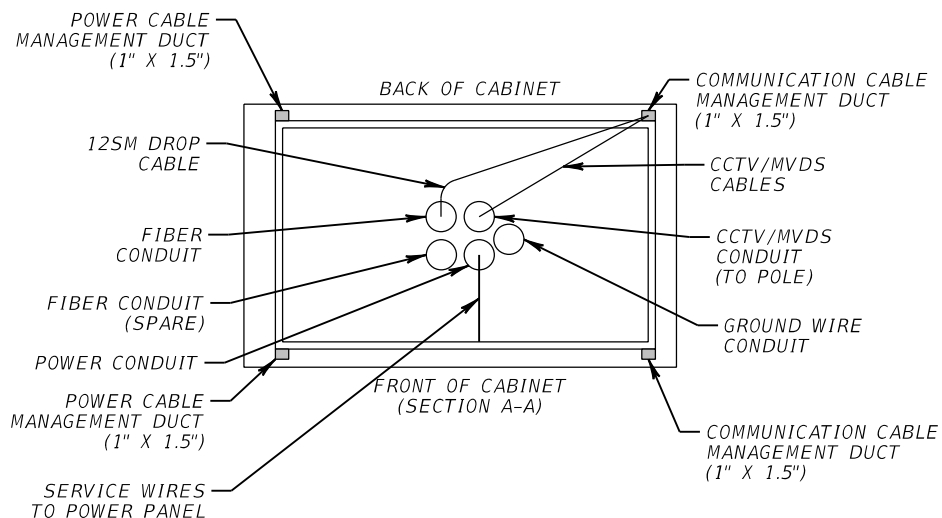
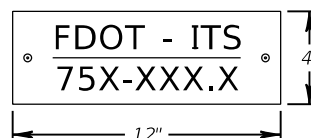


FRONT VIEW

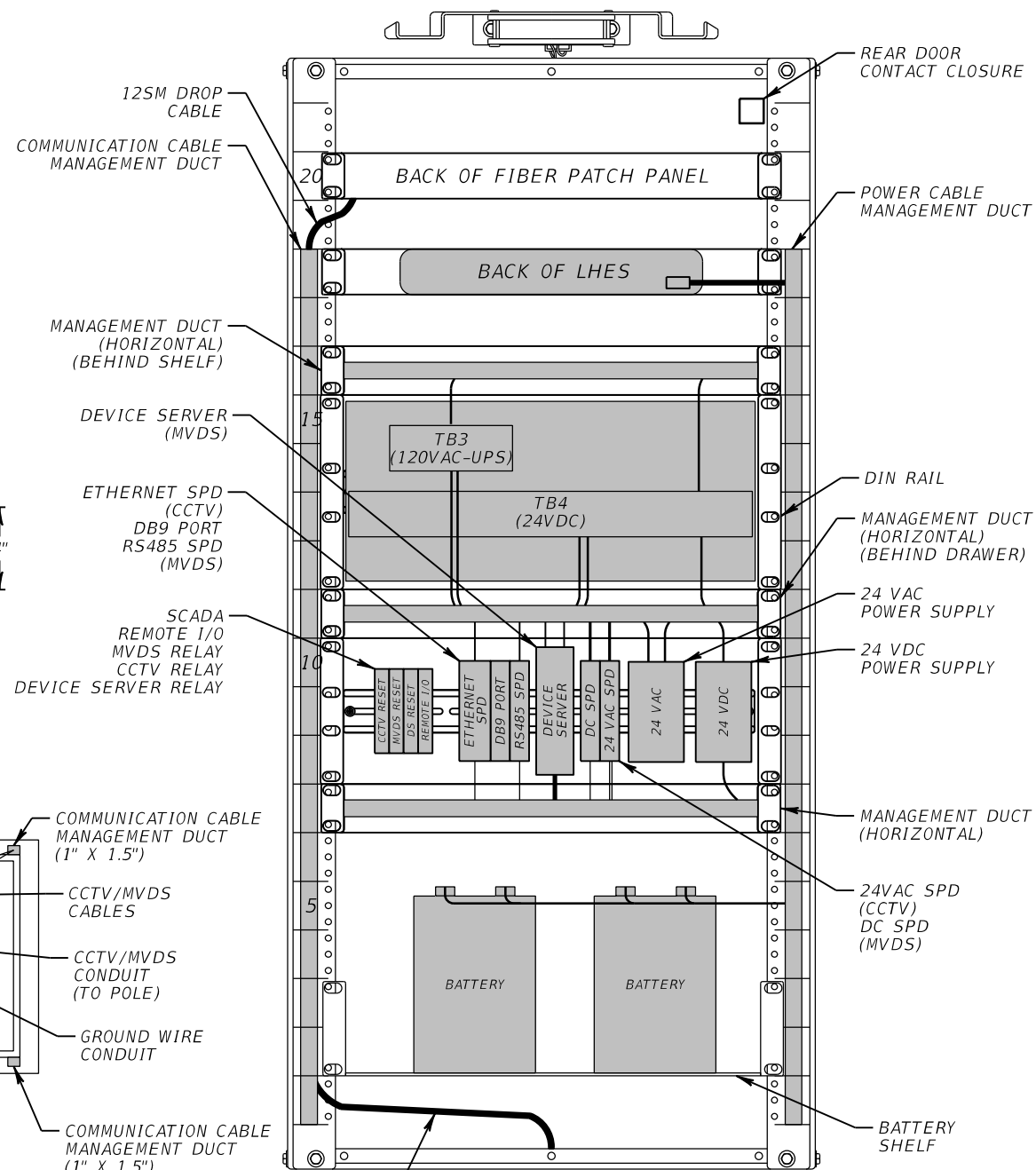


CABINET TAG

(SEE NOTE 2 & 3)



BACK VIEW



NOTES:

- SEE WIRING DIAGRAMS FOR DETAILED WIRING SCHEMATIC.
- 75X-XXX.X REPRESENTS THE LHUB NUMBER OF EACH CABINET.
- CABINET IDENTIFICATION TAG SHALL BE MADE OF ALUMINUM GRADE HIGH INTENSITY PRISMATIC (HIP), GAUGE .080 WITH SQUARE CORNERS. THE TAG SHALL HAVE A GREEN BACKGROUND WITH WHITE 1 1/4" LETTERING AND SHALL BE SECURELY FASTENED TO THE CABINET IN LOCATION OPTIMAL FOR VIEWING FROM THE ROADWAY.

LHUB 75N-354.3, 75N-357.7, 75N-359.8,
75S-363.5, 75N-367.0, 75S-369.7,
75S-370.9, 75N-371.4, 75N-373.2
(CCTV & MVDS)

REVISIONS			
DATE	DESCRIPTION	DATE	DESCRIPTION

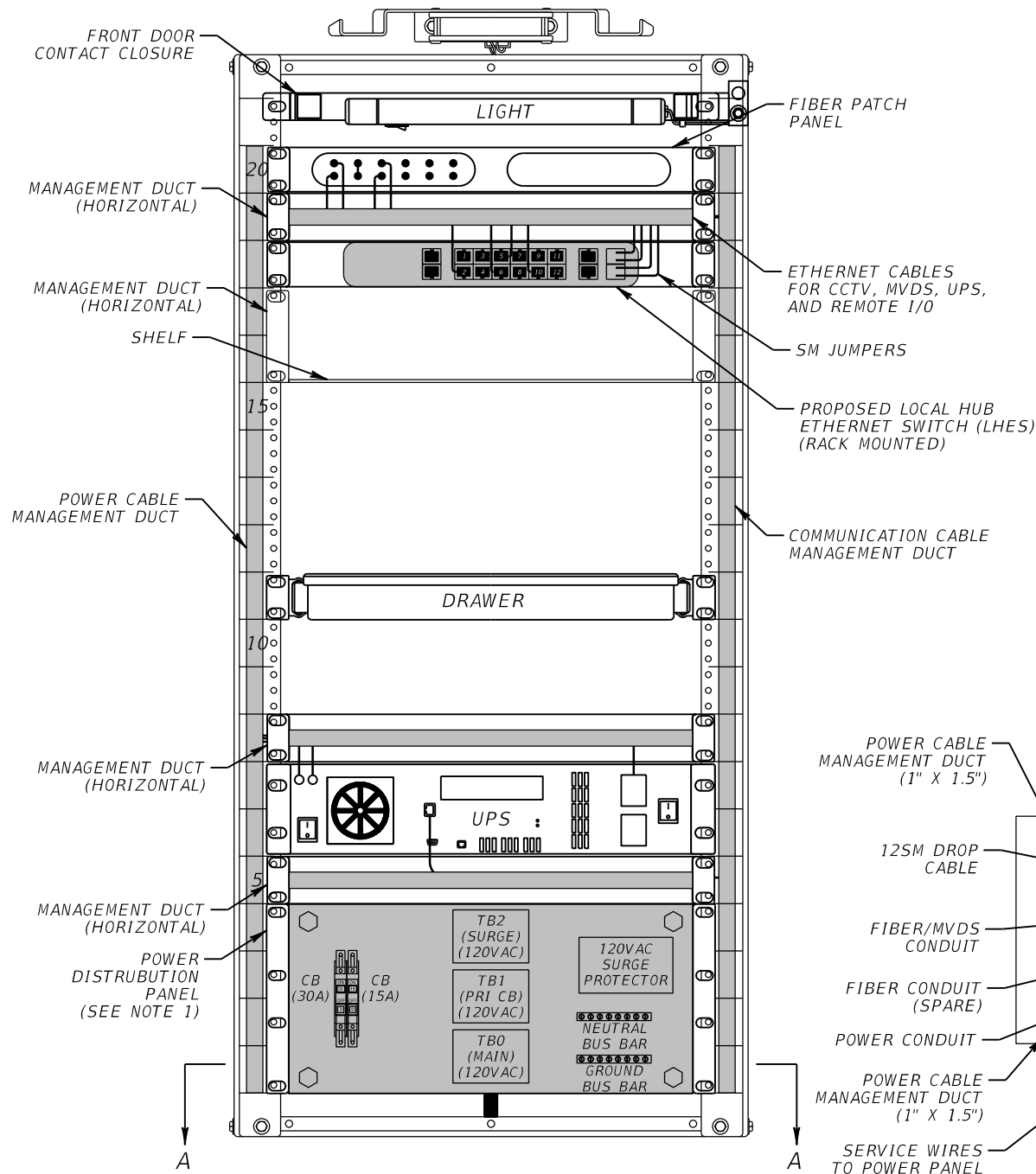
METRIC ENGINEERING, INC.
ROBERT MASTASCUSA, P.E. # 66600
615 CRESCENT EXECUTIVE CT
SUITE 524
LAKE MARY, FLORIDA 32746
TEL. (407) 644-1898
FAX. (407) 644-2376
CERTIFICATE OF AUTHORIZATION 2294

STATE OF FLORIDA DEPARTMENT OF TRANSPORTATION		
ROAD NO.	COUNTY	FINANCIAL PROJECT ID
SR 93	MARION	428213-2-52-02

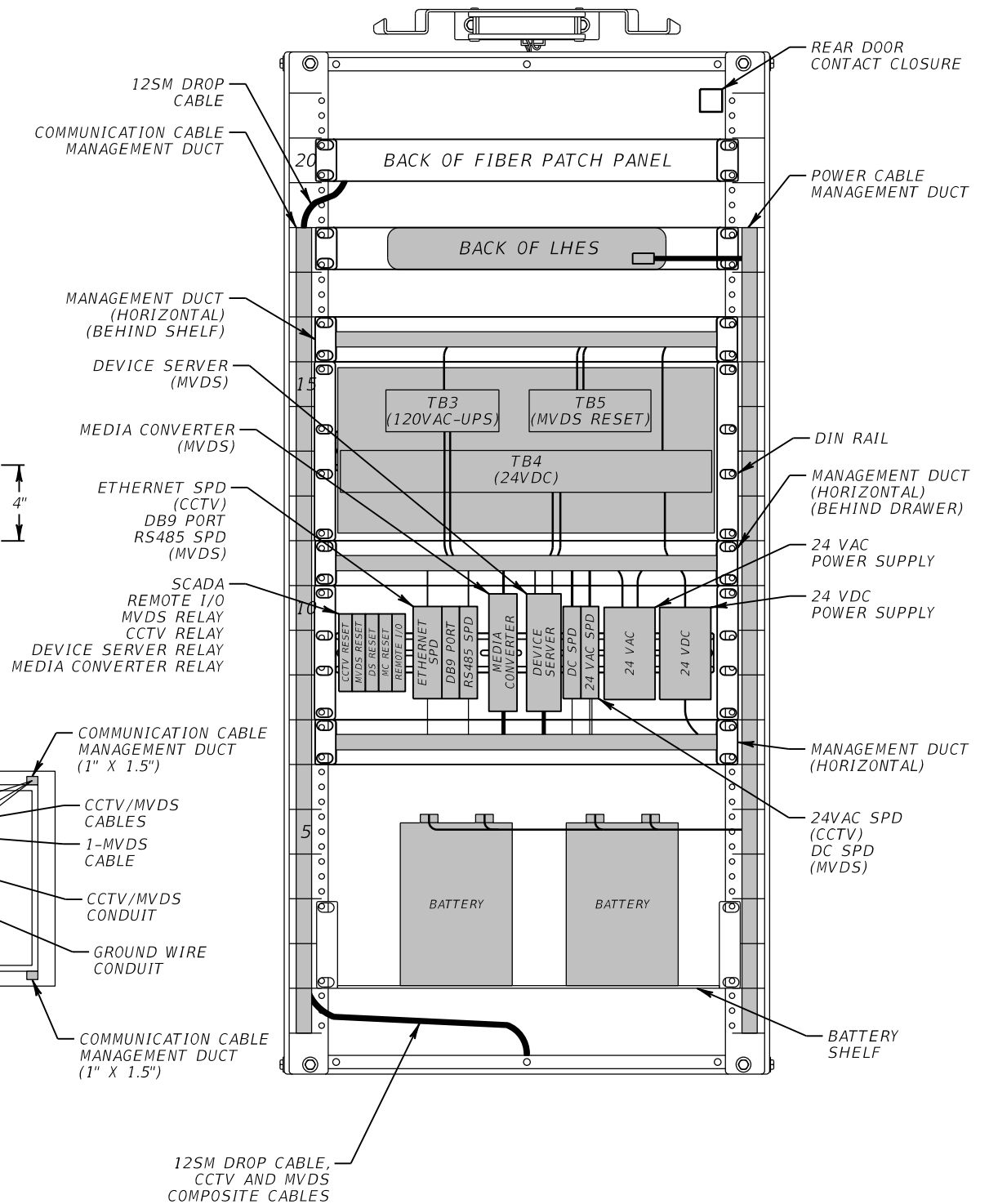
CABINET DETAILS		SHEET NO. IT-120
------------------------	--	----------------------------

NOTICE: THE OFFICIAL RECORD OF THIS SHEET IS THE ELECTRONIC FILE SIGNED AND SEALED UNDER RULE 61G15-23.003, F.A.C.

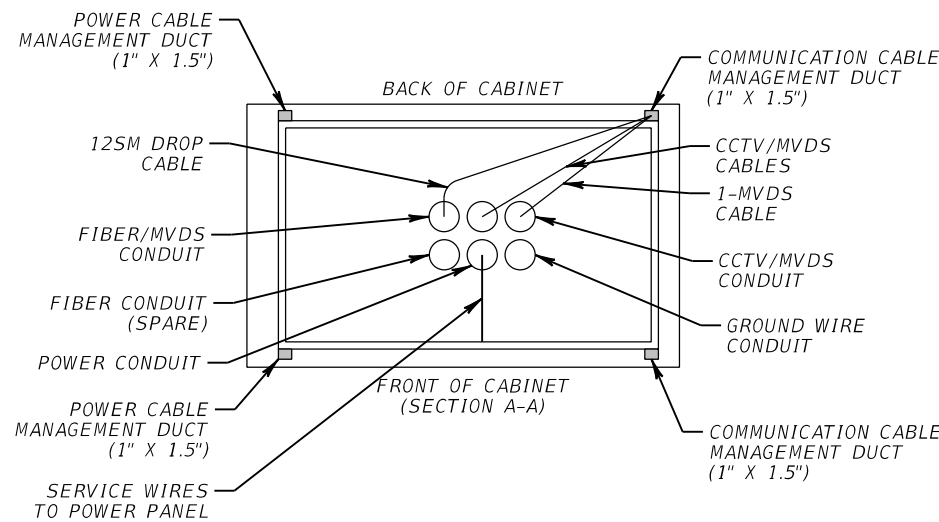
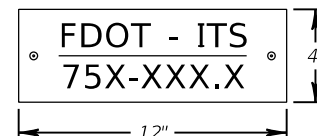
FRONT VIEW



BACK VIEW



CABINET TAG
(SEE NOTE 2 & 3)



NOTES:

- SEE WIRING DIAGRAMS FOR DETAILED WIRING SCHEMATIC.
- 75X-XXX.X REPRESENTS THE LHUB NUMBER OF EACH CABINET.
- CABINET IDENTIFICATION TAG SHALL BE MADE OF ALUMINUM GRADE HIGH INTENSITY PRISMATIC (HIP), GAUGE .080 WITH SQUARE CORNERS. THE TAG SHALL HAVE A GREEN BACKGROUND WITH WHITE 1 1/4" LETTERING AND SHALL BE SECURELY FASTENED TO THE CABINET IN LOCATION OPTIMAL FOR VIEWING FROM THE ROADWAY.

LHUB 75S-355.1, 75N-356.0, 75N-360.8,
75N-361.7, 75N-363.9, 75S-364.9, 75N-365.9,
75S-370.4, 75N-373.9
(CCTV & MVDS, 1-EXTERNAL MVDS)

REVISIONS			
DATE	DESCRIPTION	DATE	DESCRIPTION

METRIC ENGINEERING, INC.
ROBERT MASTASCUSA, P.E. # 66600
615 CRESCENT EXECUTIVE CT
SUITE 524
LAKE MARY, FLORIDA 32746
TEL. (407) 644-1898
FAX. (407) 644-2376
CERTIFICATE OF AUTHORIZATION 2294

STATE OF FLORIDA DEPARTMENT OF TRANSPORTATION		
ROAD NO.	COUNTY	FINANCIAL PROJECT ID
SR 93	MARION	428213-2-52-02

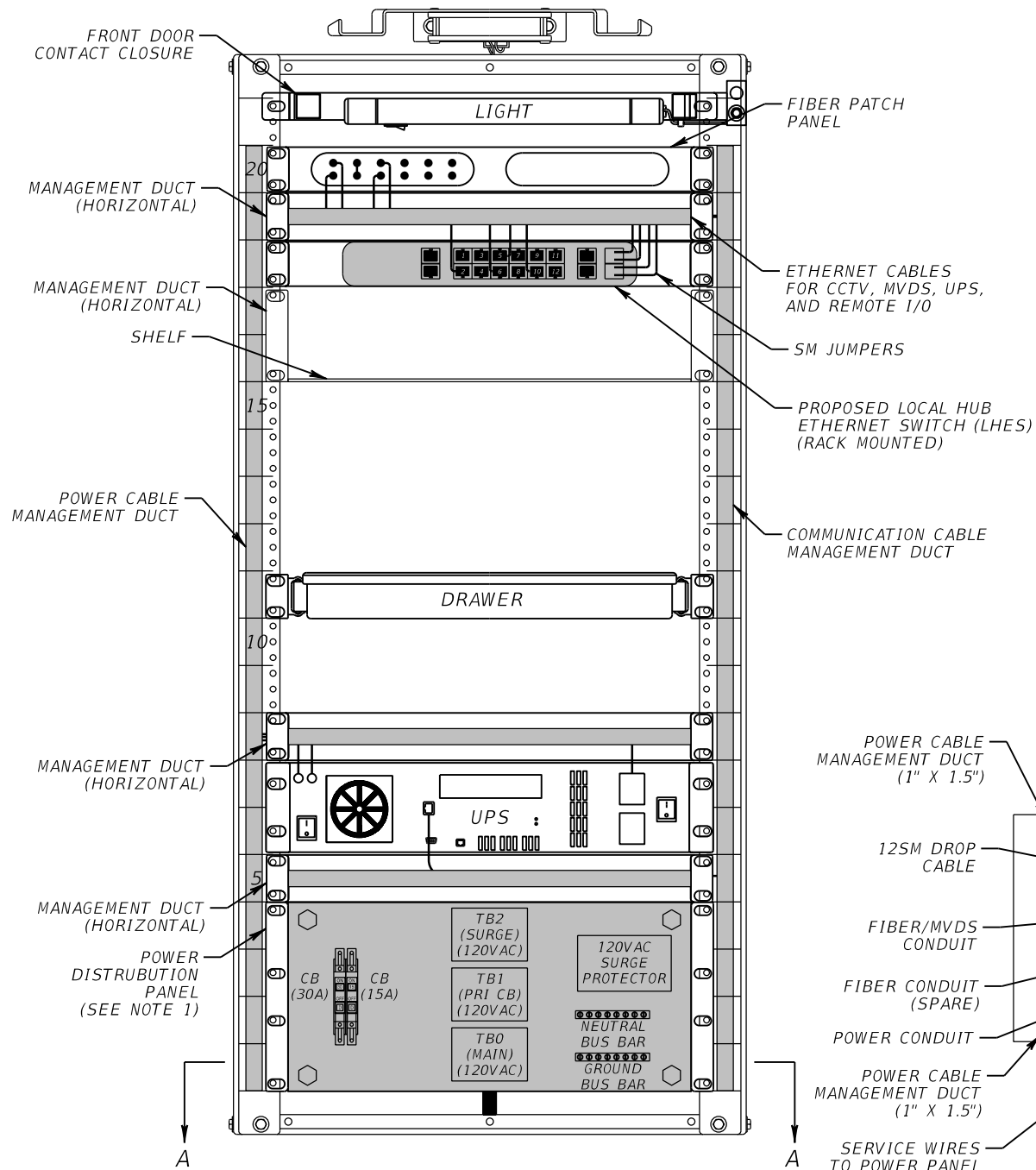
CABINET DETAILS

SHEET NO.

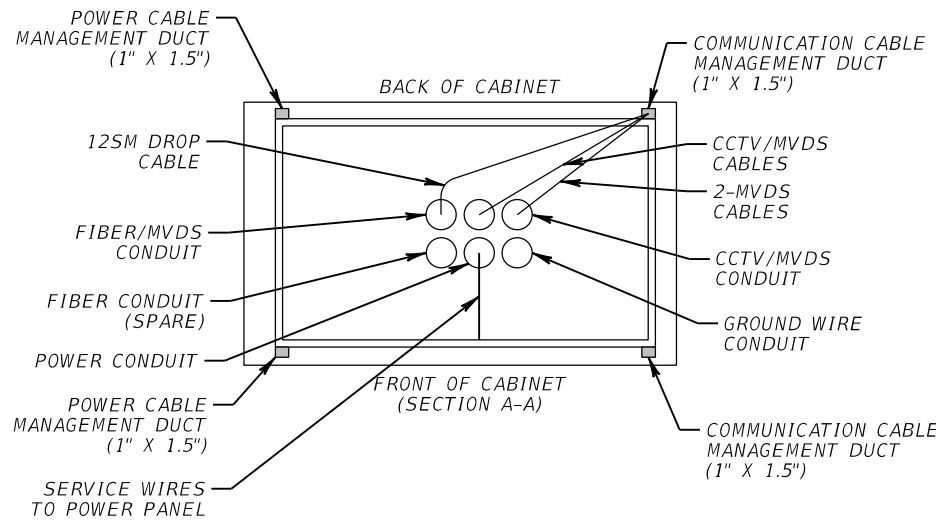
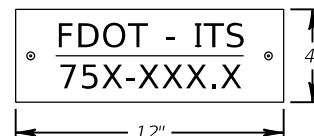
IT-121

NOTICE: THE OFFICIAL RECORD OF THIS SHEET IS THE ELECTRONIC FILE SIGNED AND SEALED UNDER RULE 61G15-23.003, F.A.C.

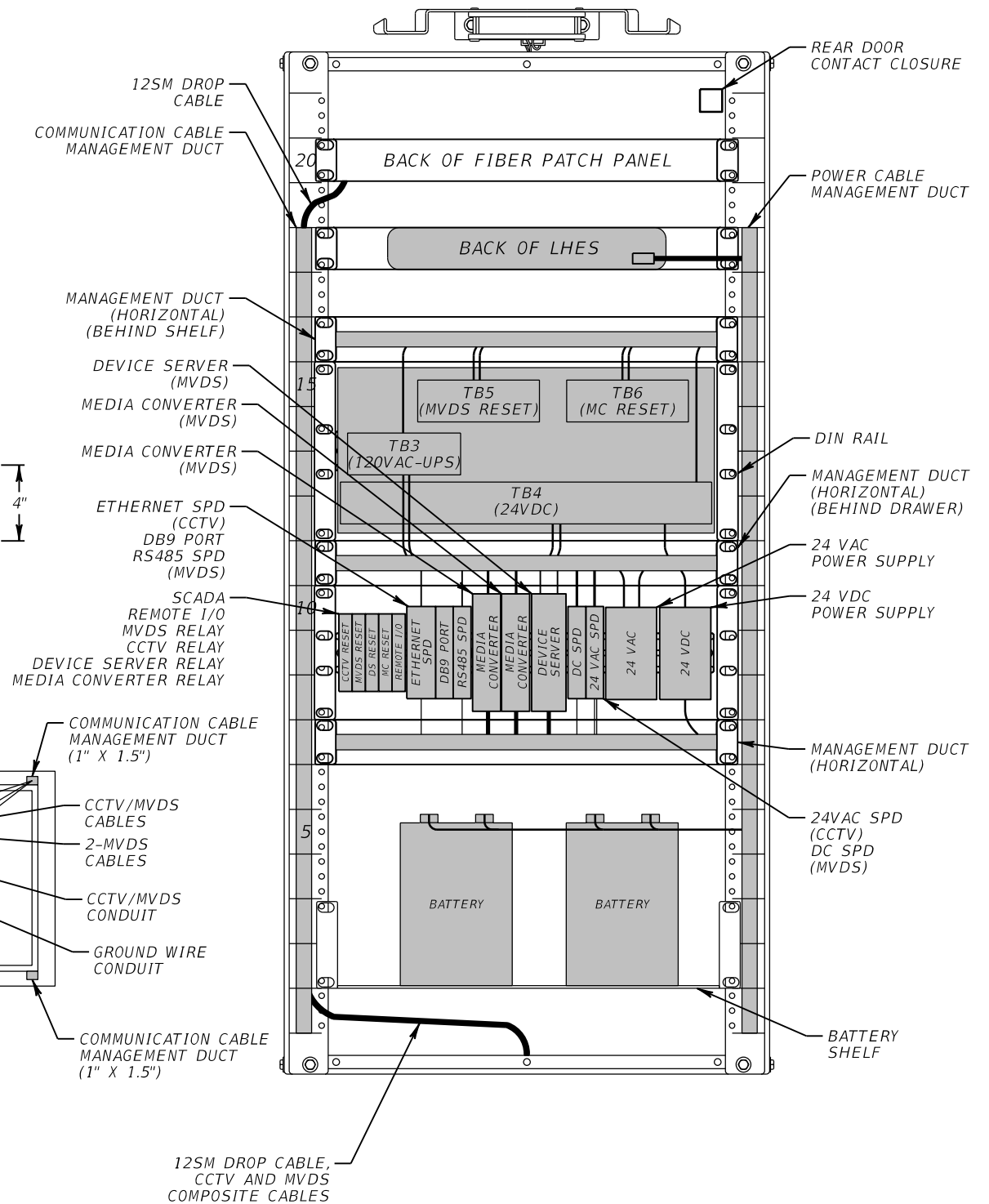
FRONT VIEW



CABINET TAG
(SEE NOTE 2 & 3)



BACK VIEW



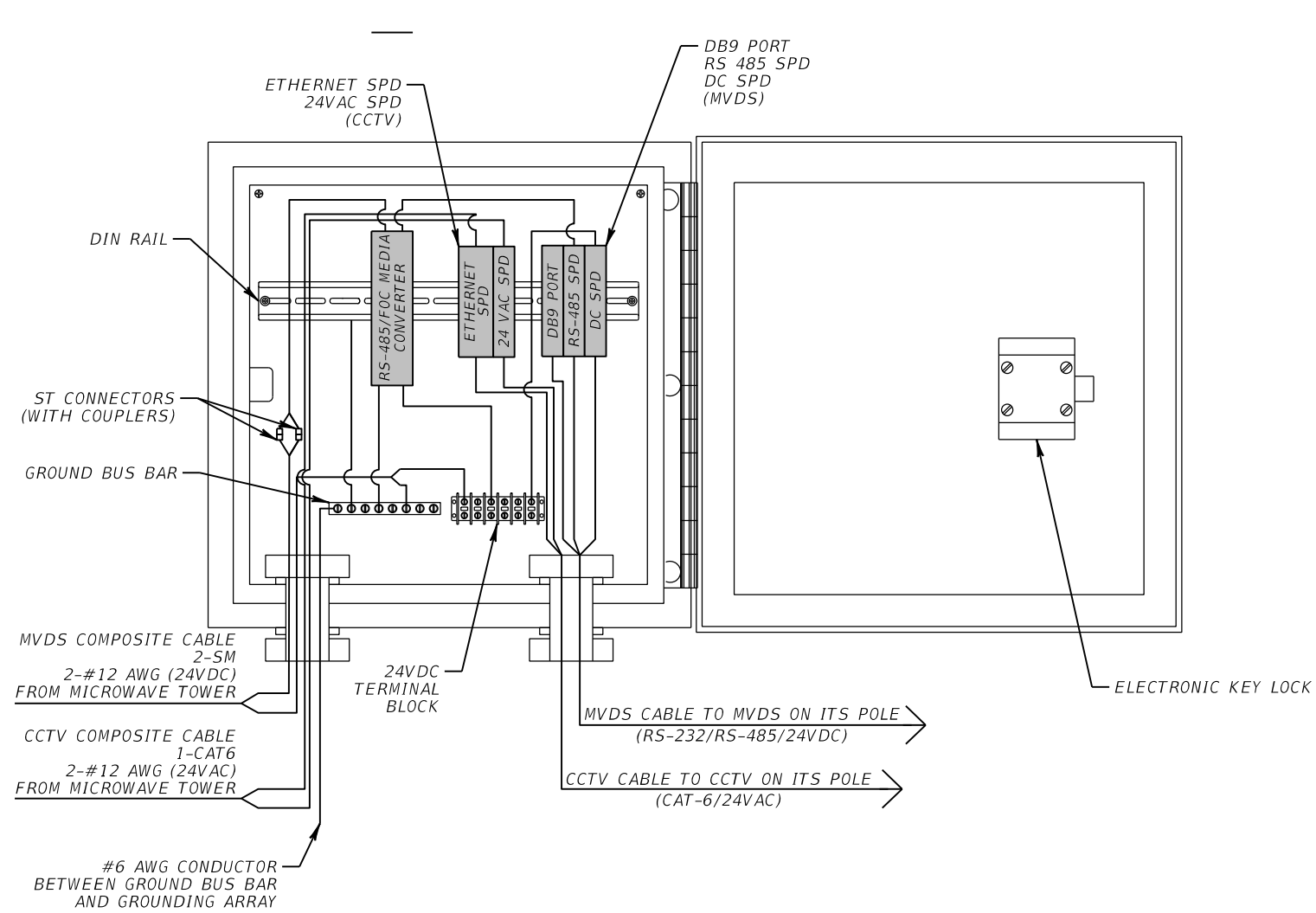
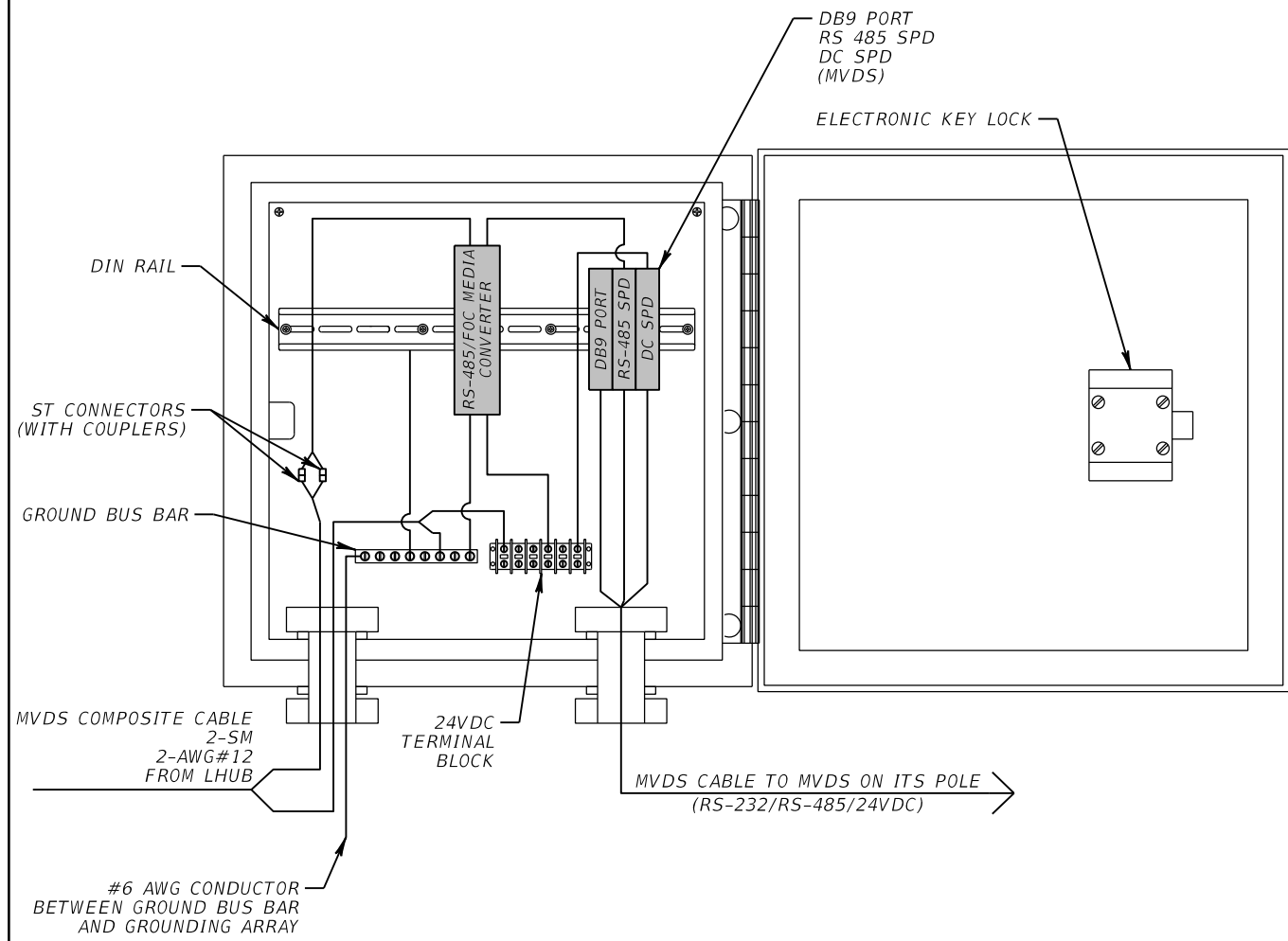
NOTES:

- SEE WIRING DIAGRAMS FOR DETAILED WIRING SCHEMATIC.
- 75X-XXX.X REPRESENTS THE LHUB NUMBER OF EACH CABINET.
- CABINET IDENTIFICATION TAG SHALL BE MADE OF ALUMINUM GRADE HIGH INTENSITY PRISMATIC (HIP), GAUGE .080 WITH SQUARE CORNERS. THE TAG SHALL HAVE A GREEN BACKGROUND WITH WHITE 1 1/4" LETTERING AND SHALL BE SECURELY FASTENED TO THE CABINET IN LOCATION OPTIMAL FOR VIEWING FROM THE ROADWAY.

LHUB 75N-356.7, 75N-358.7, 75N-362.7, 75N-368.8, 75N-372.3
(CCTV & MVDS, 2-EXTERNAL MVDS)

REVISIONS				METRIC ENGINEERING, INC. ROBERT MASTASCUSA, P.E. # 66600 615 CRESCENT EXECUTIVE CT SUITE 524 LAKE MARY, FLORIDA 32746 TEL. (407) 644-1898 FAX. (407) 644-2376 CERTIFICATE OF AUTHORIZATION 2294	STATE OF FLORIDA DEPARTMENT OF TRANSPORTATION			SHEET NO. IT-122
DATE	DESCRIPTION	DATE	DESCRIPTION		ROAD NO.	COUNTY	FINANCIAL PROJECT ID	
					SR 93	MARION	428213-2-52-02	

NOTICE: THE OFFICIAL RECORD OF THIS SHEET IS THE ELECTRONIC FILE SIGNED AND SEALED UNDER RULE 61G15-23.003, F.A.C.



MVDS 75-354.8, 75-355.7, 75-356.3, 75-357.2, 75-358.3,
75-359.3, 75-360.3, 75-361.3, 75-362.2, 75-363.2,
75-364.5, 75-365.4, 75-366.5, 75-367.5, 75-368.4,
75-369.2, 75-370.1, 75-371.9, 75-372.7, 75-373.6
 (MVDS)

CCTV 75-367.9 & MVDS 75-367.9
 (ALL EXISTING EQUIPMENT SHALL BE REMOVED)
 (EXISTING NEMA TO BE REPLACED)

REVISIONS			
DATE	DESCRIPTION	DATE	DESCRIPTION

METRIC ENGINEERING, INC.
 ROBERT MASTASCUSA, P.E. # 66600
 615 CRESCENT EXECUTIVE CT
 SUITE 524
 LAKE MARY, FLORIDA 32746
 TEL. (407) 644-1898
 FAX. (407) 644-2376
 CERTIFICATE OF AUTHORIZATION 2294

STATE OF FLORIDA DEPARTMENT OF TRANSPORTATION		
ROAD NO.	COUNTY	FINANCIAL PROJECT ID
SR 93	MARION	428213-2-52-02

CABINET DETAILS

SHEET NO.
IT-123

NOTICE: THE OFFICIAL RECORD OF THIS SHEET IS THE ELECTRONIC FILE SIGNED AND SEALED UNDER RULE 61G15-23.003, F.A.C.